

Name Schlansky
Mr. Schlansky

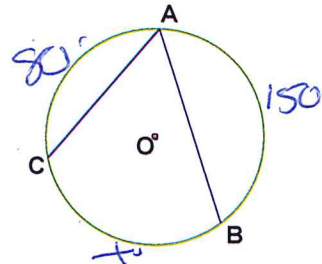
Date _____
Geometry

Arcs, Inscribed and Central Angles

1. In circle O, $\widehat{CA} = 80^\circ$ and $\widehat{AB} = 150^\circ$. Find \widehat{BC}

The arcs of a circle add to 360°

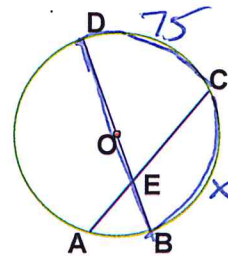
$$\begin{array}{r} 80 + 150 + x = 360 \\ 230 + x = 360 \\ -230 \quad -230 \\ \hline x = 130 \end{array}$$



2. In circle O, $\widehat{DC} = 75^\circ$, find \widehat{CB}

Diameter cuts a circle into 2 halves of 180° .

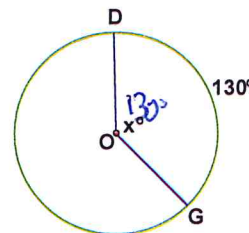
$$\begin{array}{r} x + 75 = 180 \\ -75 \quad -75 \\ \hline x = 105 \end{array}$$



3. If $\widehat{DG} = 130^\circ$, find the measure of $\angle DOG$.

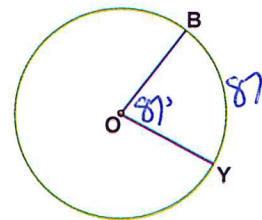
Central angle = intercepted arc

$$\angle DOG = 130^\circ$$



4. If $\angle BOY = 87^\circ$, find the measure of \widehat{BY} .

Central angle = intercepted arc
* $\widehat{BY} = 87^\circ$



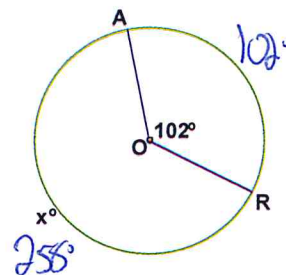
5. If $\angle AOR = 102^\circ$, find \widehat{AR} .

Central angle = intercepted arc
 $\widehat{AR} = 102^\circ$

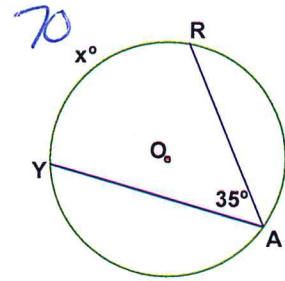
The arcs of a circle add to 360° .

$$\begin{array}{r} 102 + x = 360 \\ -102 \quad -102 \\ \hline x = 258 \end{array}$$

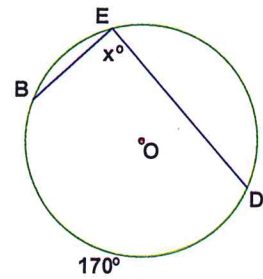
$$\widehat{AR} = 258^\circ$$



6. If $\angle RAY = 35^\circ$, find \widehat{RY}
 inscribed angle = $\frac{1}{2}$ (intercepted arc)
 $2(35) = 70$
 $\widehat{RY} = 70$



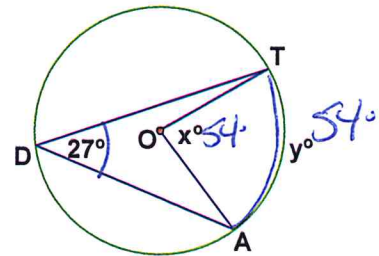
7. If $\widehat{BD} = 170^\circ$, find the measure of $\angle BED$.
 inscribed angle = $\frac{1}{2}$ (intercepted arc)
 $\frac{1}{2}(170) = 85$
 $\angle BED = 85^\circ$



8. If $\angle TDA = 27^\circ$, find:

- a) $\angle TOA = 54^\circ$
 b) $\widehat{TA} = 54^\circ$

inscribed angle = $\frac{1}{2}$ (intercepted arc)
 $= 2(27) = 54$
 $\widehat{TA} = 54^\circ$
 central angle = intercepted arc
 $\angle TOA = 54^\circ$



9. In circle K, $m\angle TRI = 4x + 6$ and $\widehat{TI} = 84^\circ$. Find the value of x.

inscribed angle = $\frac{1}{2}$ (intercepted arc)

$$2(4x + 6) = 84$$

$$8x + 12 = 84$$

$$\begin{array}{r} 8x + 12 = 84 \\ -12 \quad -12 \\ \hline 8x = 72 \\ \frac{8x}{8} = \frac{72}{8} \\ x = 9 \end{array}$$

