

reflect first!

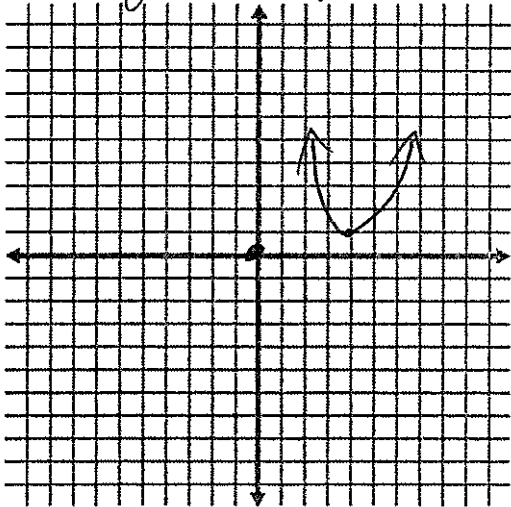
Name Schlansky
Mr. Schlansky

Date _____
Pre Calculus

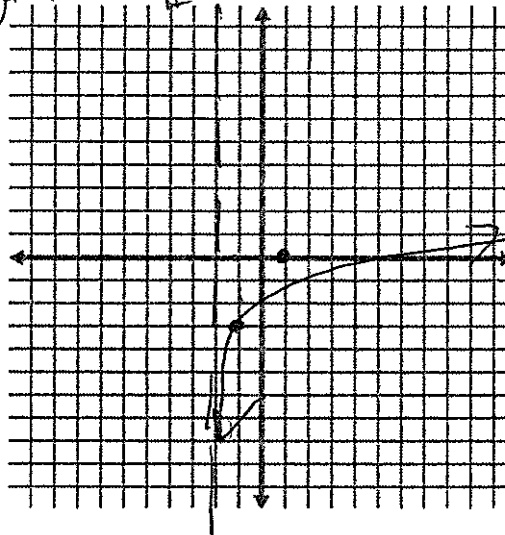
Sketching Functions with Transformations

Sketch the following functions on the provided grid

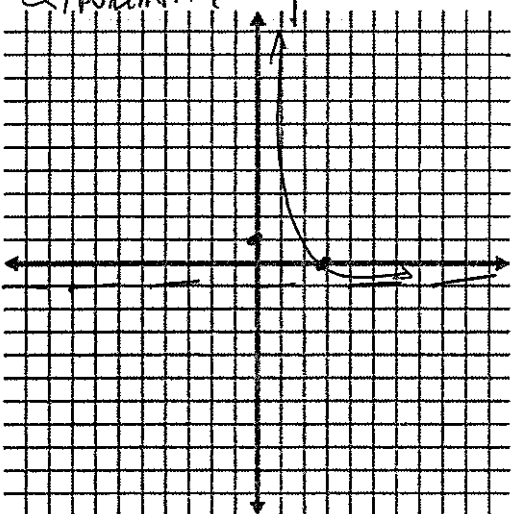
1. $f(x) = (x-4)^2 + 1$
parabola
right 4, up 1



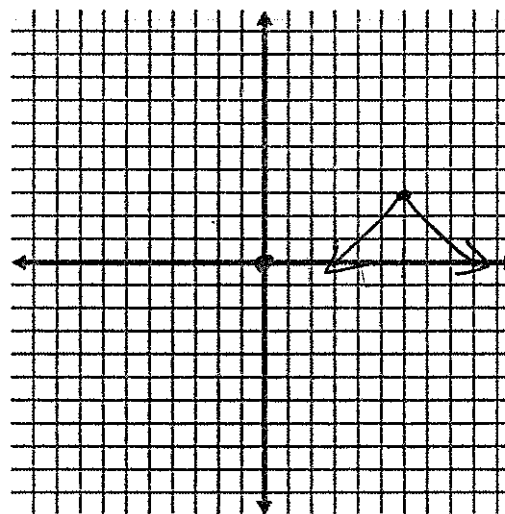
2. $f(x) = \log_4(x+2) - 3$
logarithmic
left 2
down 3



3. $f(x) = 4^{-(x-3)} - 1$
exponential
reflect y-axis
right 3
down 1

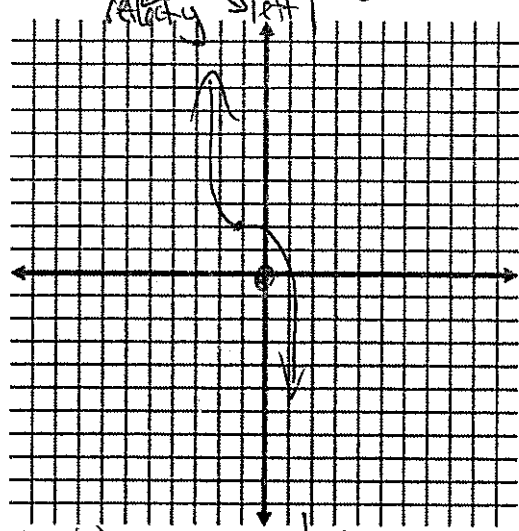


4. $f(x) = -|x-6|^2 + 3$
absolute value
reflect x-axis
right 6
up 3

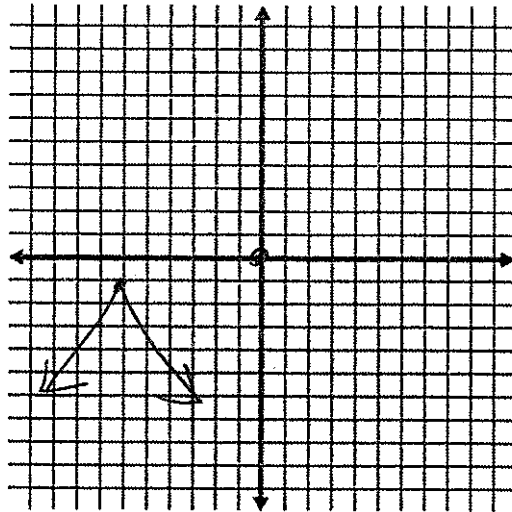


$f(x) = x^3$ Cubic

5. $f(x) = -(x+1)^3 + 2$ → up 2



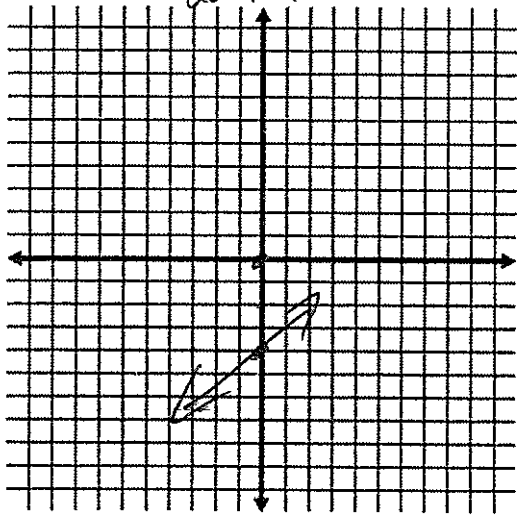
6. $f(x) = -\sqrt{x+6} - 1$ → down 1



square root
 $f(x) = \sqrt{x}$

linear $f(x) = x$

7. $f(x) = x - 4$



8. $f(x) = 2 + \frac{1}{x-3}$ $f(x) = \frac{1}{x}$ rational

