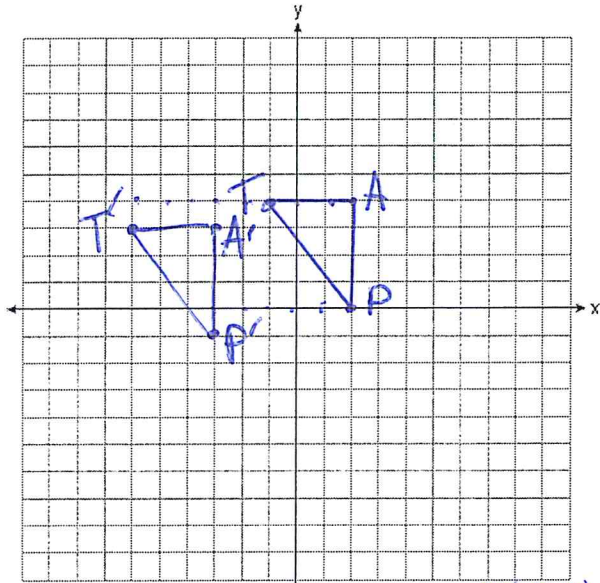


Name Schlansky  
Mr. Schlansky

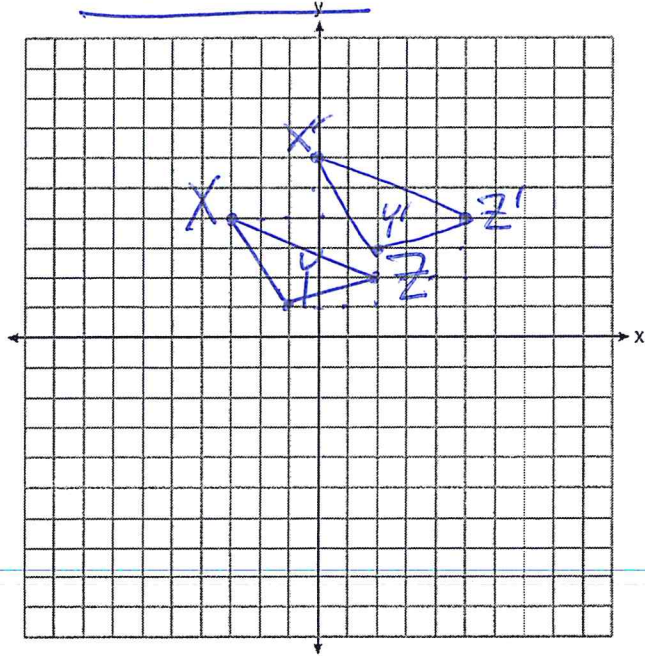
Date \_\_\_\_\_  
Geometry

## Translations

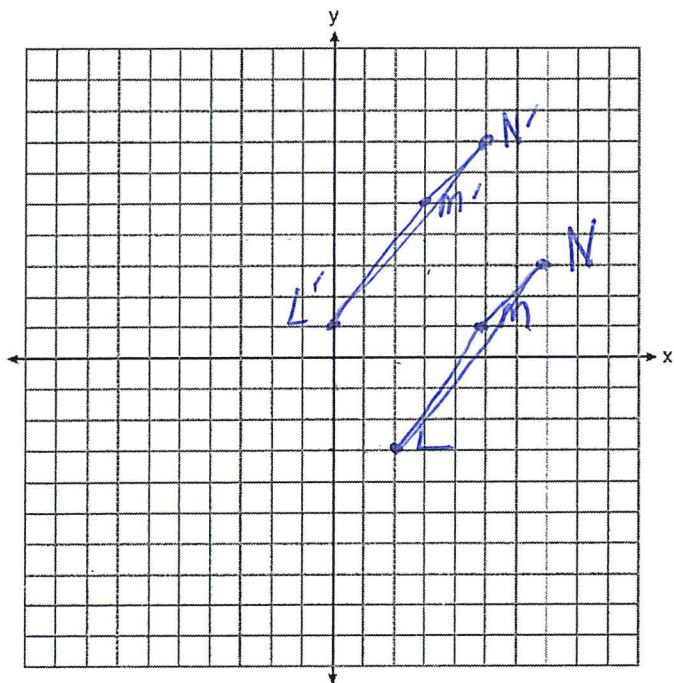
1. Triangle  $TAP$  has coordinates  $T(-1, 4)$ ,  $A(2, 4)$ , and  $P(2, 0)$ . On the set of axes below, graph and label  $\triangle T'A'P'$ , the image of  $\triangle TAP$  after the translation 5 units to the left and 1 unit down.



2. Graph the image of  $\triangle XYZ$  with  $X(-3, 4)$ ,  $Y(-1, 1)$ , and  $Z(2, 2)$  after a translation 3 units to the right and 2 unit up.



3. What is the image of  $\triangle LMN$  with vertices  $L(2,-3)$ ,  $M(5,1)$  and  $N(7,3)$  after a translation 2 units to the left and 4 units up?



4. Graph the image of quadrilateral ADEF with vertices  $A(4,-1)$ ,  $D(8,-2)$ ,  $E(6,3)$ , and  $F(2,7)$  after a translation 5 units to the left?

